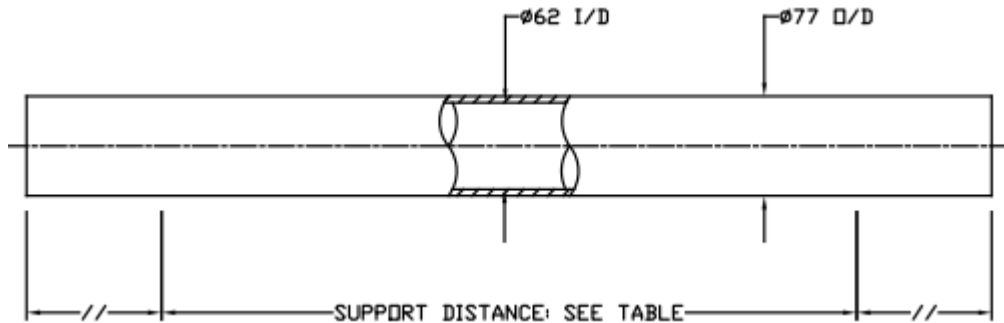


Technical Data Sheet

Working Pressure: 1000 psi Working Temperature: 0°C to 45°C
 Assembly Drawing: 1MNC 1503 Design Code: PED

Product Code: 2.5E1000N Issue: [always request current issue]



Order Reference	No. of 40" Elements	Overall Length +/- 4 mm	Max Support Position	Min Support Position	Max Dry Weight kg
2.5E 1000N.12"	12"	473	370	100	2.1
2.5E 1000N.14"	14"	473	370	100	2.1
2.5E 1000N.21"	21"	651	550	200	2.8
2.5E 1000N.40"	40"	1133	1000	400	4.6
2.5E 1000N.2	2 x 40"	2149	1500	860	8.3
2.5E 1000N.3	3 x 40"	3165	2000	1600	12.0

Feed & Concentrate Connections: 1/4" BSPT (Female)

Product Connections: 1/4" BSPT (Female)

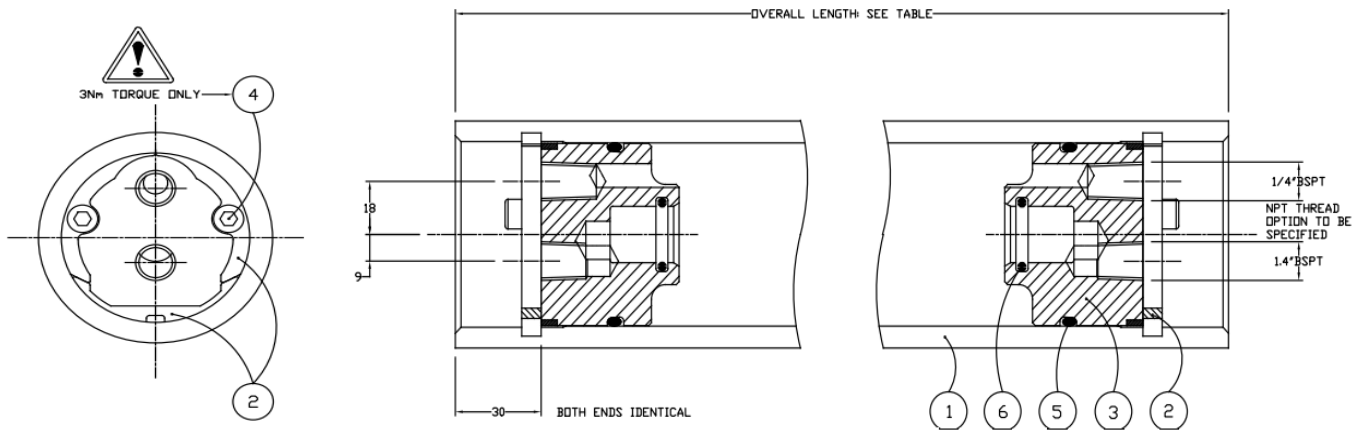
Body of vessel is manufactured completely from glass reinforced epoxy resins. Pressure vessels can be produced to cover all leading manufacturers' membranes regardless of length. Please advise membrane type and length when requesting further details. Please adhere to recommended support positions. If in doubt, contact Phoenix Vessel Technology.

NB: CONFIRM WITH PHOENIX VESSEL TECHNOLOGY THAT YOU ARE WORKING TO THE LATEST DIMENSIONS PRIOR TO ANY RIG DESIGN WORK

All dimensions in mm

All dimensions and weights are nominal unless stated otherwise

Product Code: 2.5E1000N Issue: [always request current issue]



DO NOT EXCEED THE MAXIMUM TORQUE

Item	Description	Material		Part No.	Qty
1	Vessel Body	Glass Fibre Epoxy resin		BDY 1438	1
2	Retaining Ring Set	St. Steel 316		CMP 1537	2
3	End Cap	Thermoplastic	¼ BSPT	CMP 1536	2
			¼ NPT	CMP 1789	
4	Cap Head Screw	Acetal		CMP 902	4
5	'O' Seal for End Cap	Acetal		BS 227	2
6	'O' Seal for Membrane	Thermoplastic		BS 210	2

Phoenix Vessel Technology Limited
Unit 2, The Old Bakery
Lower Tuffley Lane
Gloucester
GL2 5DP
UK

The company reserves the right to alter specifications without prior notice.

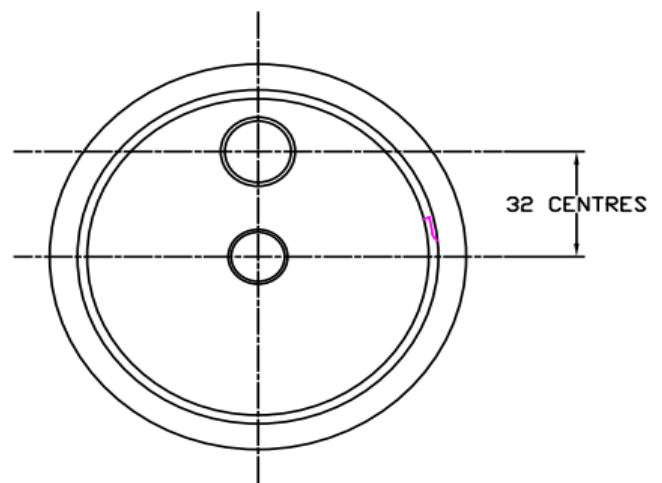
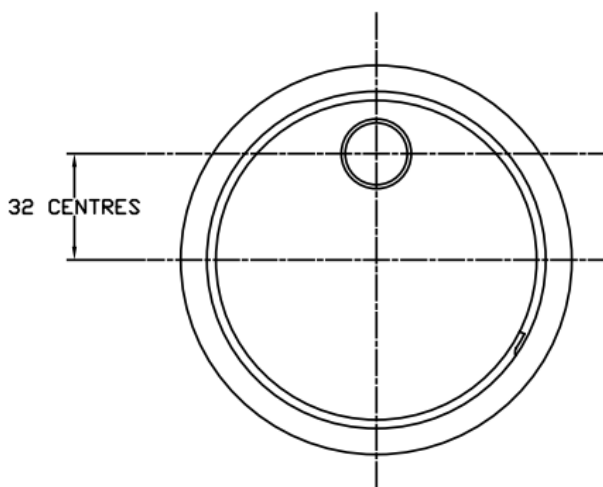
Contact Phoenix Vessel Technology to request latest issue.

For lubricants and general assembly refer to the **User Guide on our Website**

T: +44 (0) 1452 311673
E: adam.stait@ravago.com
www.phoenixvessel.co.uk



Product Code: 2.5E1000N Issue: [always request current issue]



Phoenix Vessel Technology Limited
Unit 2, The Old Bakery
Lower Tuffley Lane
Gloucester
GL2 5DP
UK

T: +44 (0) 1452 311673
E: adam.stait@ravago.com
www.phoenixvessel.co.uk

The company reserves the right to alter specifications without prior notice.
This data sheet supersedes all previous issues
For lubricants and general assembly refer to the
User Guide on our Website

