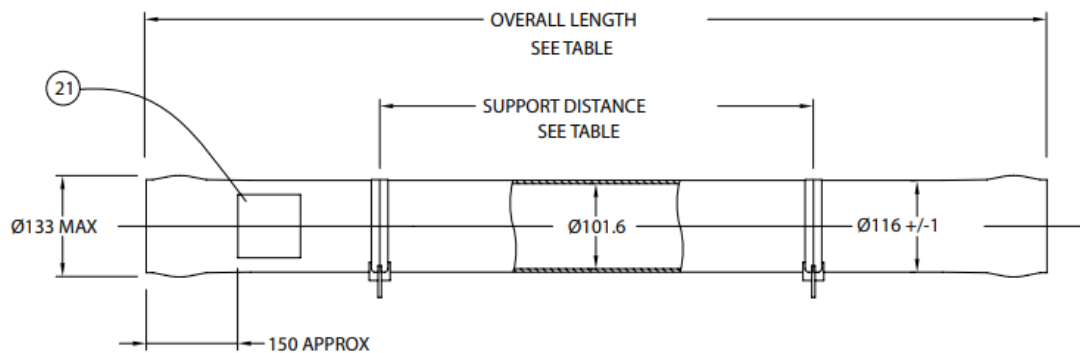


## Technical Data Sheet

Working Pressure: 600 psi      Working Temperature: 0°C to 45°C  
 Assembly Drawing: 1MNC 1619      Design Code: PED

**Product Code: 4E600N** Issue: [always request current issue]



Order Reference	No. of 40" Elements	Overall Length +/- 2	Max Support Position	Min Support Position	Max Dry Weight kg
4E600N.1	1a	1185	800	200	12.0
4E600N.2	2	2201	1630 C	1030	17.2
4E600N.3	3	3217	2625 C	2025 C	22.4
4E600N.4	4	4233	3360 C	2760 C	27.6
4E600N.5	5	5249	4090 C	3490 C	32.8
4E600N.6	6	6265	4820 C	4220 C	38.0
C-Central Support required					

Feed & Concentrate Connections: 1/2" BSP (Female)

Product Connections: 3/8" BSP (Female)

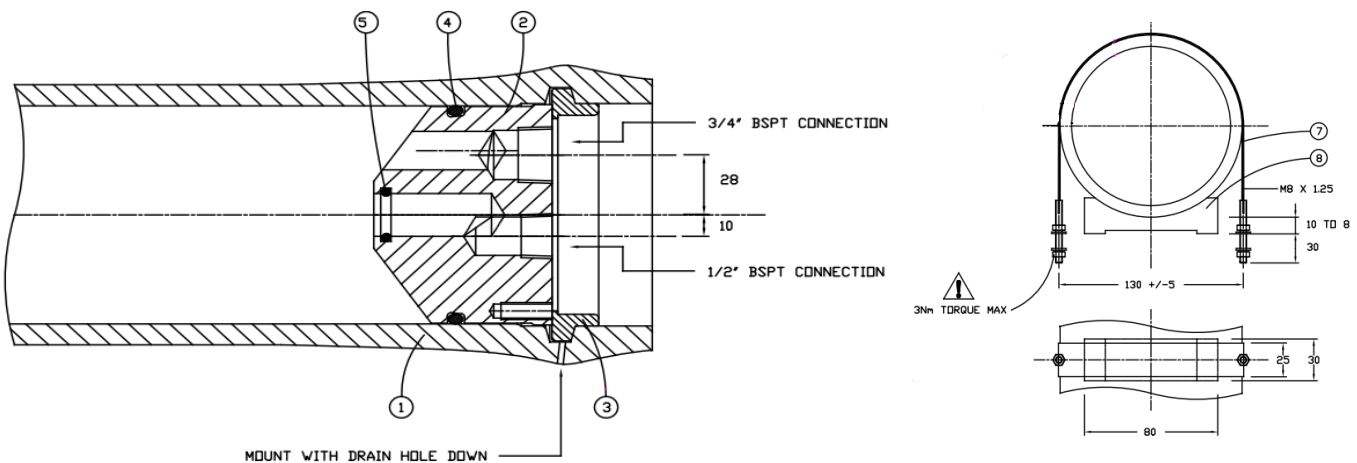
Body of vessel is manufactured completely from glass reinforced epoxy resins. Pressure vessels can be produced to cover all leading manufacturers' membranes regardless of length. Please advise membrane type and length when requesting further details. Please adhere to recommended support positions. If in doubt, contact Phoenix Vessel Technology.

**NB: CONFIRM WITH PHOENIX VESSEL TECHNOLOGY THAT YOU ARE WORKING TO THE LATEST DIMENSIONS PRIOR TO ANY RIG DESIGN WORK**

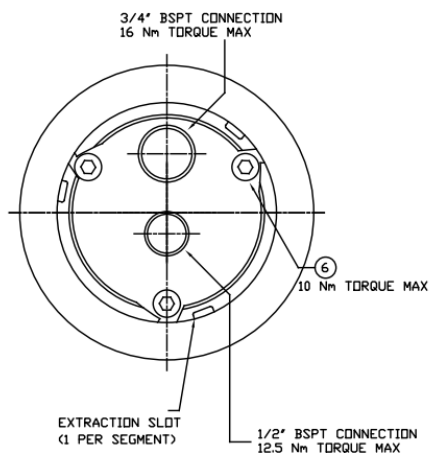
All dimensions in mm

All dimensions and weights are nominal unless stated otherwise

**Product Code: 4E600N** Issue: [always request current issue]



**DO NOT EXCEED THE MAXIMUM TORQUE**



Item	Description	Material	Part No.	Qty
1	Vessel Body	Glass Fibre Epoxy Resin	BDY 3993	1
2	Backing Plate	Acetal Thermoplastic	CMP 3895	2
3	Retaining Rings	ST.ST 316	CMP 1104	2
4	'O' Seal Endplate	EPDM	BS 342	2
5	'O' Seal	EPDM	BS 210	2
6	Cap Head Screw	ST.ST. A4 Grade	CMP 1077	6
7	Strap	ST.ST/Neoprene	CMP 3570	2/3
8	Saddle	Urethane	CMP 1115	2/3

Phoenix Vessel Technology Limited  
Unit 2, The Old Bakery  
Lower Tuffley Lane  
Gloucester  
GL2 5DP  
UK

T: +44 (0) 1452 311673  
E: adam.stait@ravago.com  
www.phoenixvessel.co.uk

The company reserves the right to alter specifications without prior notice.

Contact Phoenix Vessel Technology to request latest issue.

For lubricants and general assembly refer to the **User Guide on our Website**

