

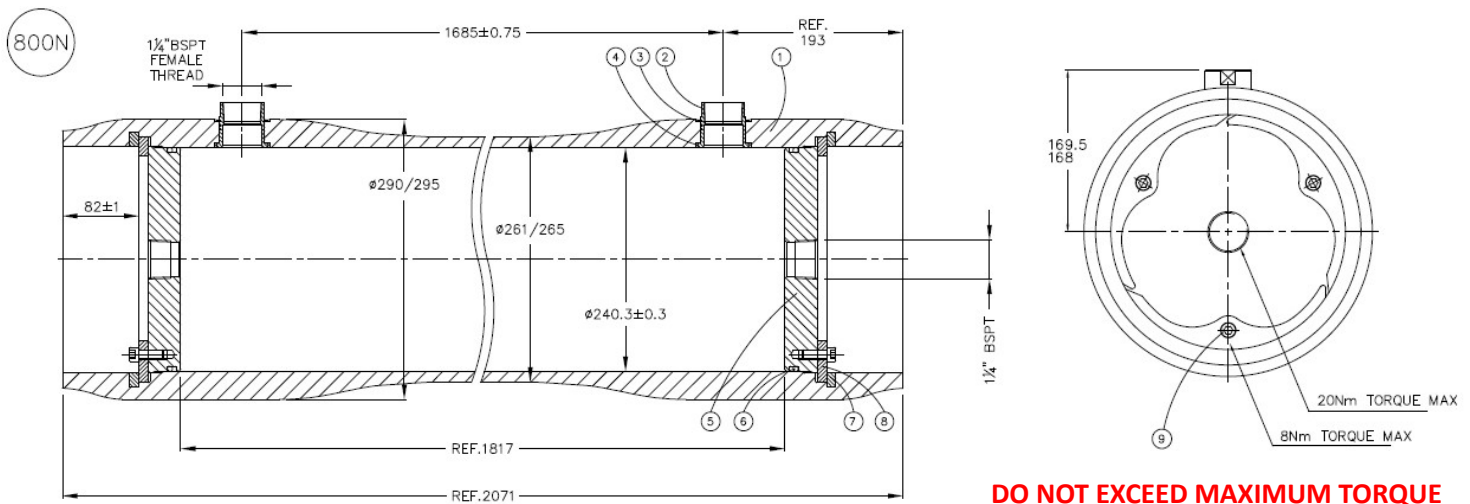
Working Pressure: 800 psi

Working Temperature: 0°C to 45°C

Assembly Drawing: 5903

Design Code: PED

Product Code: 9.45S800N Issue: [always request current issue]



Length.	PORT TO PORT LENGTH +/-1mm	MAX SUPPORT POSITION MM.	MIN SUPPORT POSITION MM.
1537	1143	875	500

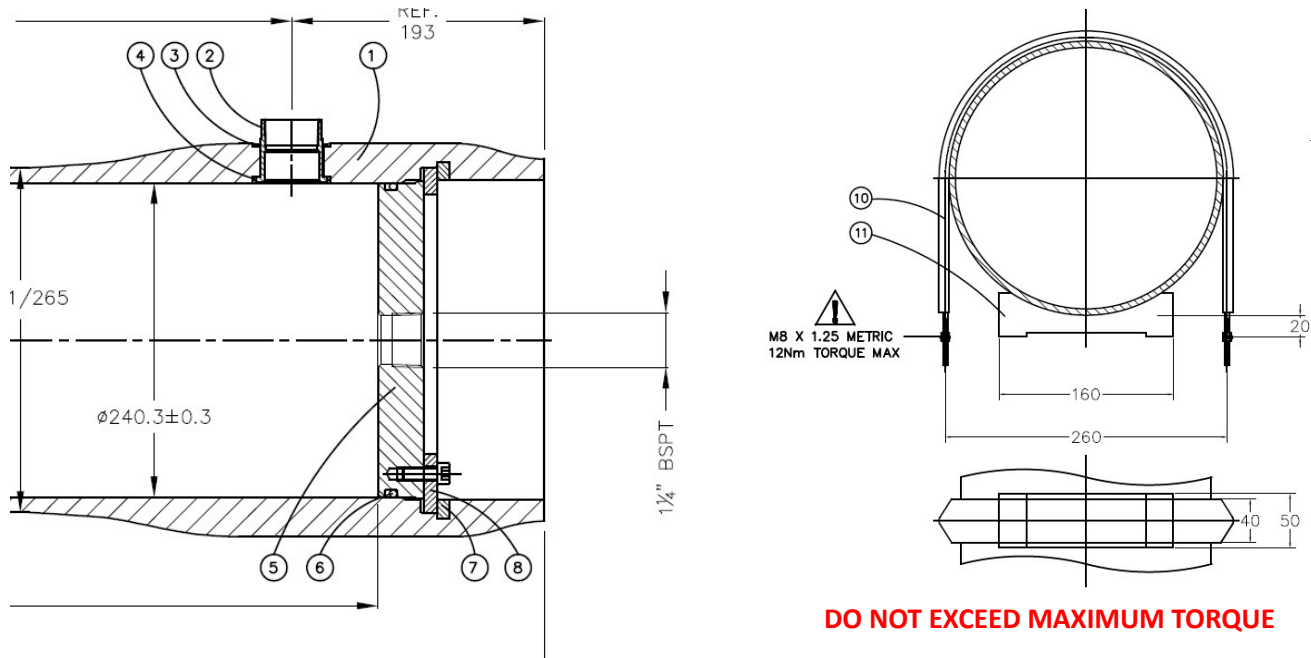
Feed/Concentrate Ports: 1.25" BSPT Internal thread

Product Connections: 1.25" BSPT Internal Thread

Body of vessel is manufactured completely from glass reinforced epoxy resins. Pressure vessels can be produced to cover all leading manufacturers membranes regardless of length. Please advise membrane type and length when requesting further details. Please adhere to recommended support positions, if in doubt contact Phoenix Vessel Technology.

NB: CONFIRM WITH PHOENIX VESSEL TECHNOLOGY THAT YOU ARE WORKING TO THE LATEST DIMENSIONS PRIOR TO ANY RIG DESIGN WORK

Product Code: 9.45S800N Issue: [always request current issue]



Item	Description	Material	Part No.	Qty
1	Vessel Body	Glass Fibre Epoxy Resin	CMP 5894	1
2	Feed Concentrate Port	ST. ST. 316L 1.25" BSPT	CMP 5907	2/3/4
3	Circlip Port	ST. ST. 316L	CMP 1950	2/3/4
4	'O' Seal Port	EPDM	BS 227	2/3/4
5	End Cap	ST. ST. 316L	CMP 5902	2
6	'O' Seal End Cap	EPDM	BS 447	2
7	Insert Ring	ST. ST. 316L	CMP 5925	2
8	Retaining Ring	ST. ST. 316L	CMP 5924	6
9	Cap Head Screw	ST. ST. A4	CMP 1520	6
10	Strap	ST. ST. / PVC	CMP 4211	2
11	Saddle	Polypropylene	CMP 1979	2

Phoenix Vessel Technology Limited
Unit 2, The Old Bakery
Lower Tuffley Lane
Gloucester
GL2 5DP UK

T: +44 (0) 1452 311673
E: adam.stait@ravago.com
www.phoenixvessel.co.uk

The company reserves the right to alter specifications without prior notice.

This data sheet supersedes all previous issues

Product: 5926

Issue: 0