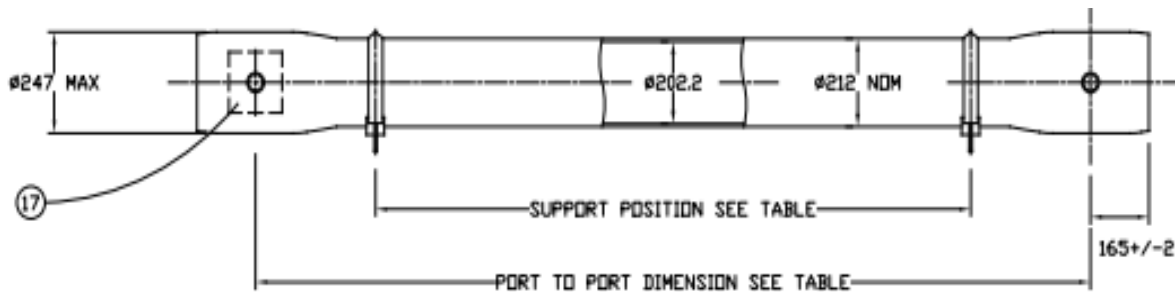


Technical Data Sheet

Working Pressure: 300 psi Working Temperature: 0°C to 45°C
 Assembly Drawing: 1MNC 1908 Design Code: PED

Product Code: 8S300N Issue: [always request current issue]



Order Reference (add port size and configuration required)	No. of 40" Elements.	Port to Port Length +/- 1 mm	Max Support Position (mm)	Min Support Position (mm)	Max Dry Weight (kg)
8S300N.1	1	1143	680	530	43
8S300N.1.5	1.5	1651	1250	1050	48
8S300N.2	2	2159	1500	1300	53
8S300N.3	3	3175	2300	1900	64
8S300N.4	4	4191	2915	2515	75
8S300N.4.5	4.5	4699	3220	2820	81
8S300N.5	5	5207	4190 C	3790 C	86
8S300N.6	6	6223	4920 C	4020 C	98
8S300N.7	7	7239	5650 C	5250 C	109
8S300N.7.5	7.5	7747	6020 C	5620 C	115
			C-Central Support required		

Feed & Concentrate Connections: 1.5" or 2.0" Victaulic

Product Connections: 1.0" BSP (Female)

Body of vessel is manufactured completely from glass reinforced epoxy resins. Pressure vessels can be produced to cover all leading manufacturers' membranes regardless of length. Please advise membrane type and length when requesting further details. Please adhere to recommended support positions. If in doubt, contact Phoenix Vessel Technology.

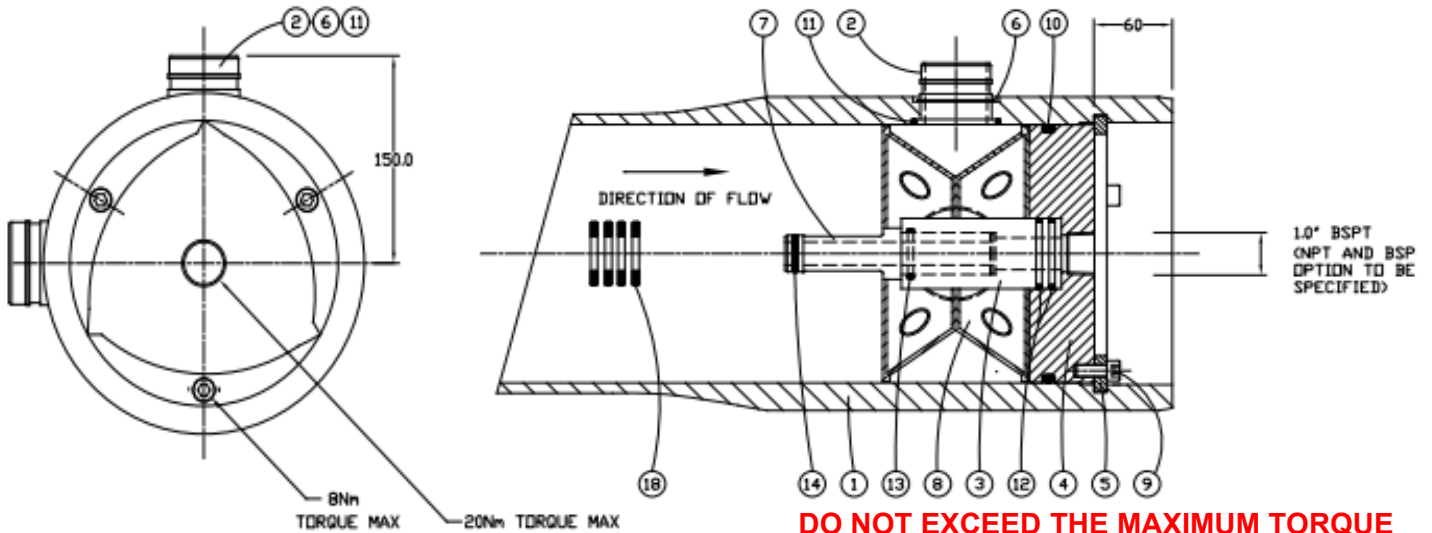
NB: CONFIRM WITH PHOENIX VESSEL TECHNOLOGY THAT YOU ARE WORKING TO THE LATEST DIMENSIONS PRIOR TO ANY RIG DESIGN WORK

All dimensions in mm

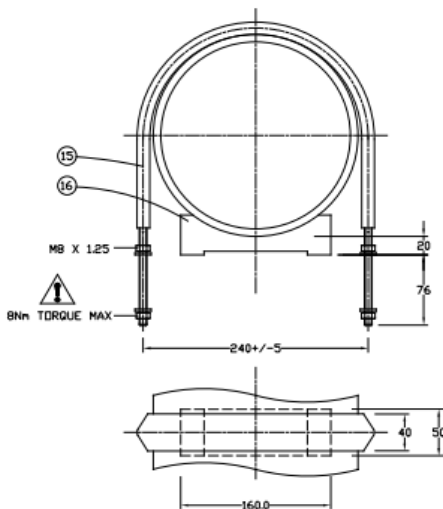
All dimensions and weights are nominal unless stated otherwise

Technical Data Sheet

Product Code: 8S300N Issue: [always request current issue]



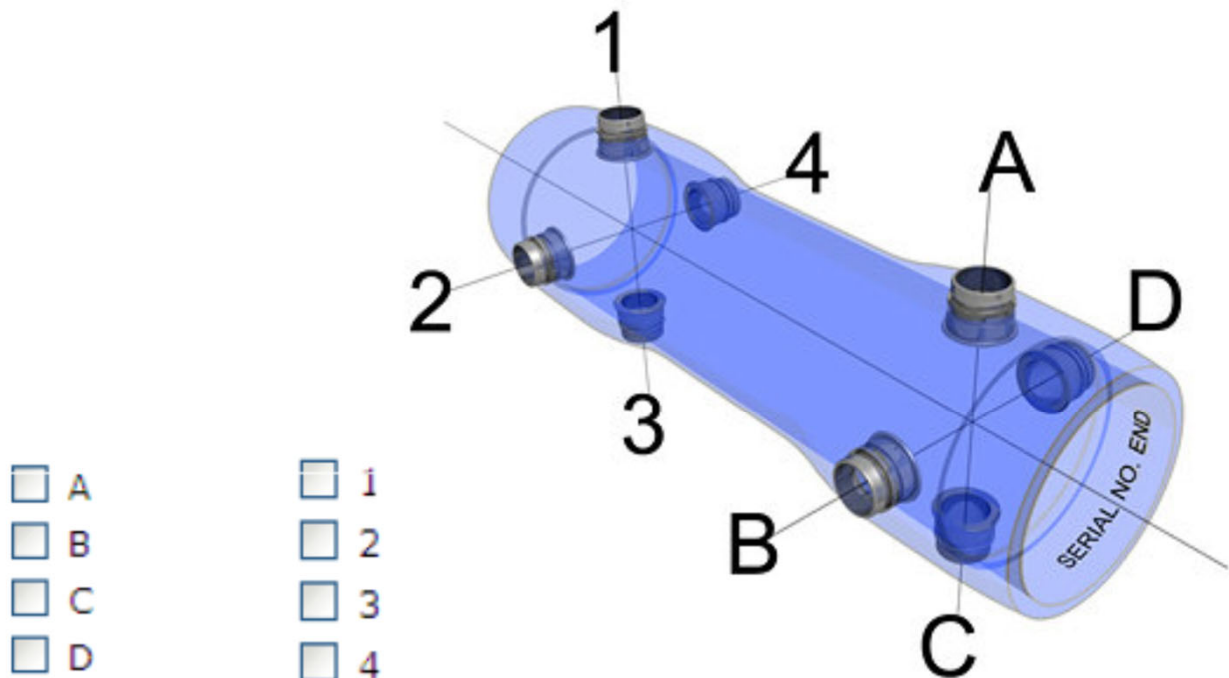
DO NOT EXCEED THE MAXIMUM TORQUE



Item	Description	Material	Part No.	Qty
1	Vessel Body	Glass Fibre Epoxy Resin	CMP 3138	1
2	Feed Concentrate Port	ST. ST. 316L	Options: 76.1 mm = CMP 4457 2.5" = CMP 4451 2.0" = CMP 3291 1.5" = CMP 3298	2/3/4
3	Hub	UPVC	CMP 1550	2
4	End Cap	Polypropylene	Options: 1" BSPT CMP 1958 1" NPT CMP 1959 1.25" NPT CMP 4701 1" BSP CMP 2386 3/4" BSP CMP 5684	2
5	Retaining Ring Set	Fibreglass	CMP 2526	2
6	Spiroloc Circlip	ST.ST	Options: 2.5" & 76.1 mm CMP 4029 2" CMP 2029 1.5" CMP 1950	2/3/4
7	Adaptor	UPVC	To Suit Membrane	2
8	Thrust Ring	Thermoplastic	CMP 4211	1
9	Cap Head Screw	ST.ST Grade A4	CMP 1520	6
10	'O' Seal End Cap	EPDM	BS 442A	2
11	'O' Seal Feed Port	EPDM	Options: 2.5", 76.1 BS 204 188 2" BS 841 1.5" BS 227	2/3/4
12	'O' Seal Hub/End Cap	EPDM	BS 225	4
13	'O' Seal Hub/Adaptor	EPDM	BS 219	2
14	'O' Seal Adaptor	EPDM	To Suit Membrane	2/4
15	Strap	ST.ST/UPVC	CMP 3426	2/3
16	Saddle	Polypropylene	CMP 3919	2/3
17	Name Plate	Vinyl	PV 098	1
18	Shims	ABS (included in item 7 above)	CMP 1674	8

Product Code: 8S300N Issue: [always request current issue]

Port Configuration Options



Phoenix Vessel Technology
Unit 2, The Old Bakery
Lower Tuffley Lane
Gloucester
GL2 5DP
UK

The company reserves the right to alter specifications without prior notice.
Contact Phoenix Vessel Technology to request latest issue.
For lubricants and general assembly refer to the **User Guide on our Website**

T: +44 (0) 1452 311673
E: adam.stait@ravago.com
www.phoenixvessel.co.uk

